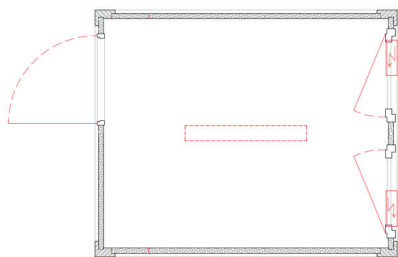


Bürocontainer [DE]

Bürocontainer Typ BC 10'

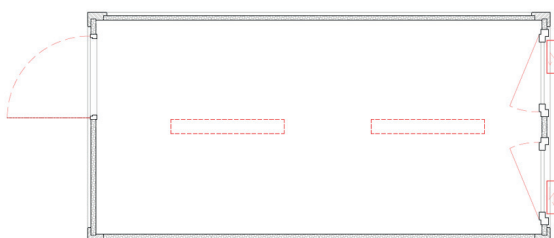
2.991 x 2.435 x 2.591



1x Stahlaussentüre, 2x Dreh-/Kipp- Fenster, 1x Heizung 2kW,
1x Deckenleuchte LED, CH-Elektroinstallation UP,
Stromeinspeisung 380V 32A

Bürocontainer Typ BC 16'

4.880 x 2.435 x 2.591



1x Stahlaussentüre, 2x Dreh-/Kipp- Fenster, 1x Heizung 2kW,
2x Deckenleuchte LED, CH-Elektroinstallation UP,
Stromeinspeisung 380V 32A

Bürocontainer Typ BC 20' - 1

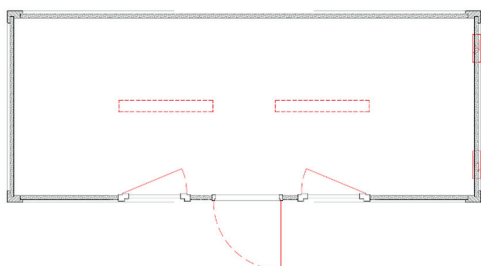
6.055 x 2.435 x 2.591



1x Stahlaussentüre, 2x Dreh-/Kipp- Fenster, 1x Heizung 2kW,
2x Deckenleuchte LED, CH-Elektroinstallation UP,
Stromeinspeisung 380V 32A

Bürocontainer Typ BC 20' - 2

6.055 x 2.435 x 2.591

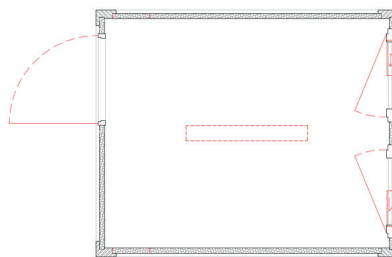


1x Stahlaussentüre, 2x Dreh-/Kipp- Fenster, 1x Heizung 2kW,
2x Deckenleuchte LED, CH-Elektroinstallation UP,
Stromeinspeisung 380V 32A

Containers bureaux [FR]

Container bureau Type BC 10'

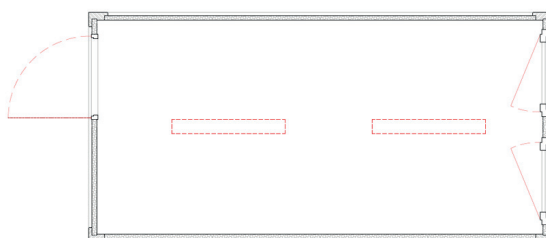
4.880 x 2.435 x 2.591



1x porte extérieure en acier, 2x fenêtres oscillo-battantes, 1x chauffage 2kW,
2x plafonnier LED, installation électrique CH encastrée,
Alimentation électrique 380V 32A

Container bureau Type BC 16'

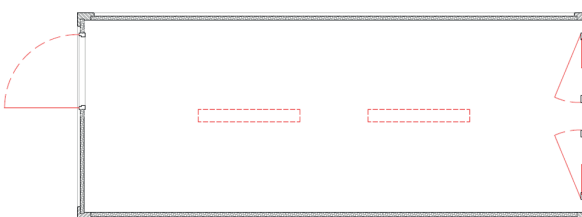
4.880 x 2.435 x 2.591



1x porte extérieure en acier, 2x fenêtres oscillo-battantes, 1x chauffage 2kW,
2x plafonnier LED, installation électrique CH encastrée,
Alimentation électrique 380V 32A

Container bureau Type BC 20' - 1

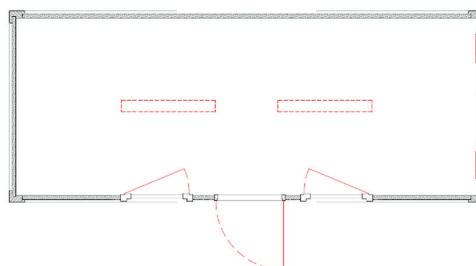
6.055 x 2.435 x 2.591



1x porte extérieure en acier, 2x fenêtres oscillo-battantes, 1x chauffage 2kW,
2x plafonnier LED, installation électrique CH encastrée,
Alimentation électrique 380V 32A

Container bureau Type BC 20' - 2

6.055 x 2.435 x 2.591



1x porte extérieure en acier, 2x fenêtres oscillo-battantes, 1x chauffage 2kW,
2x plafonnier LED, installation électrique CH encastrée,
Alimentation électrique 380V 32A